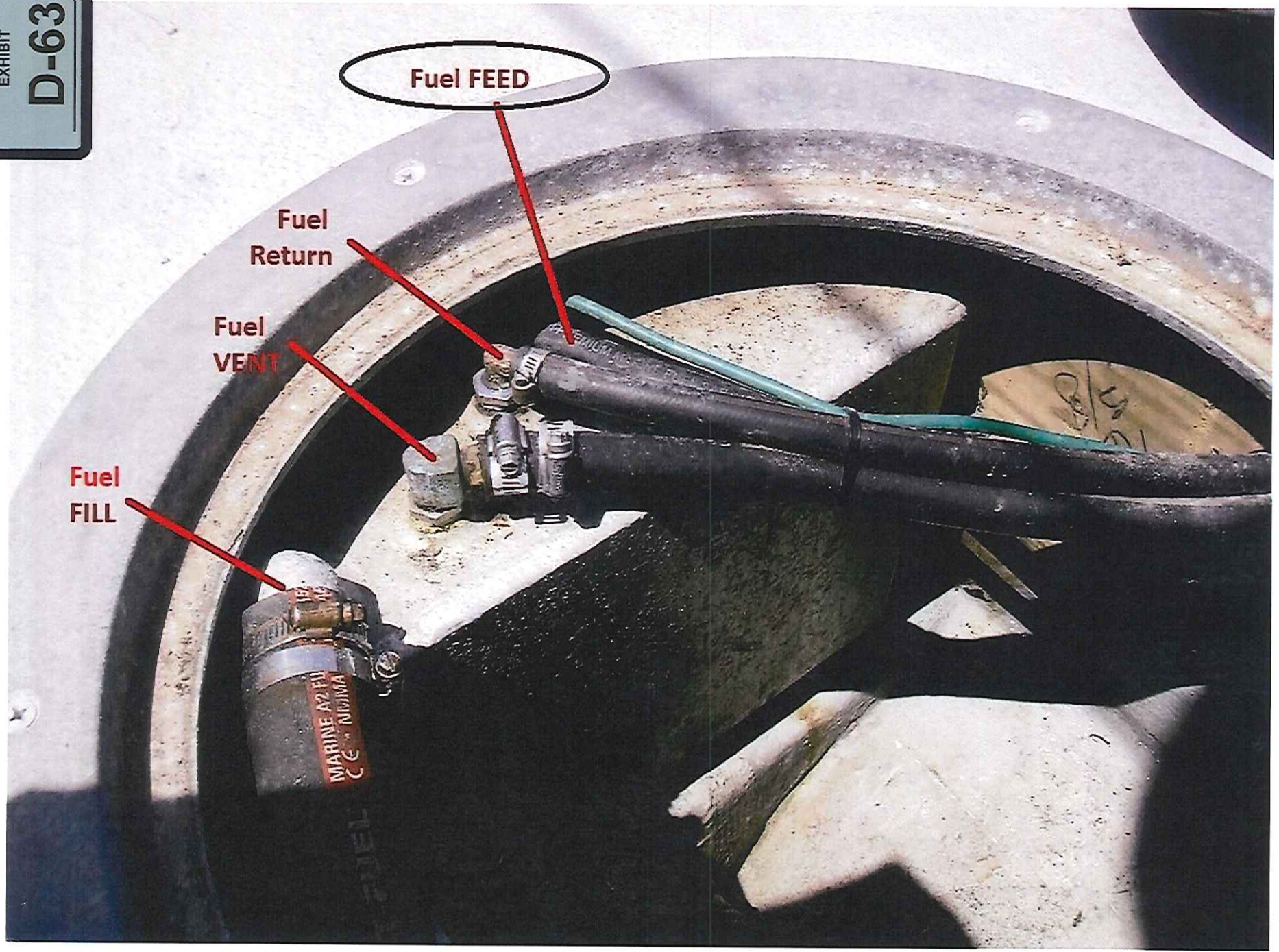


DEFENDANT'S
EXHIBIT
D-63

①



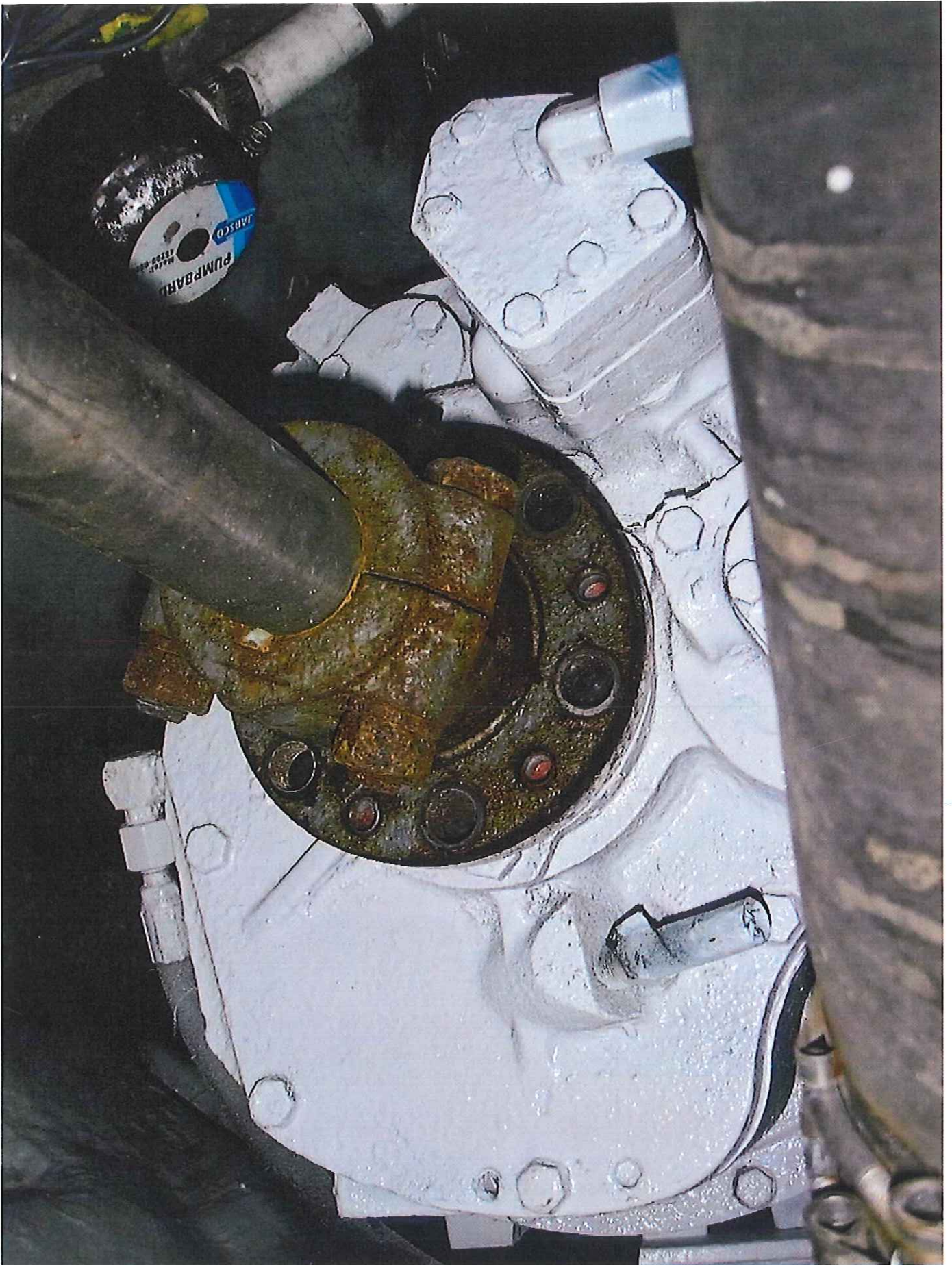


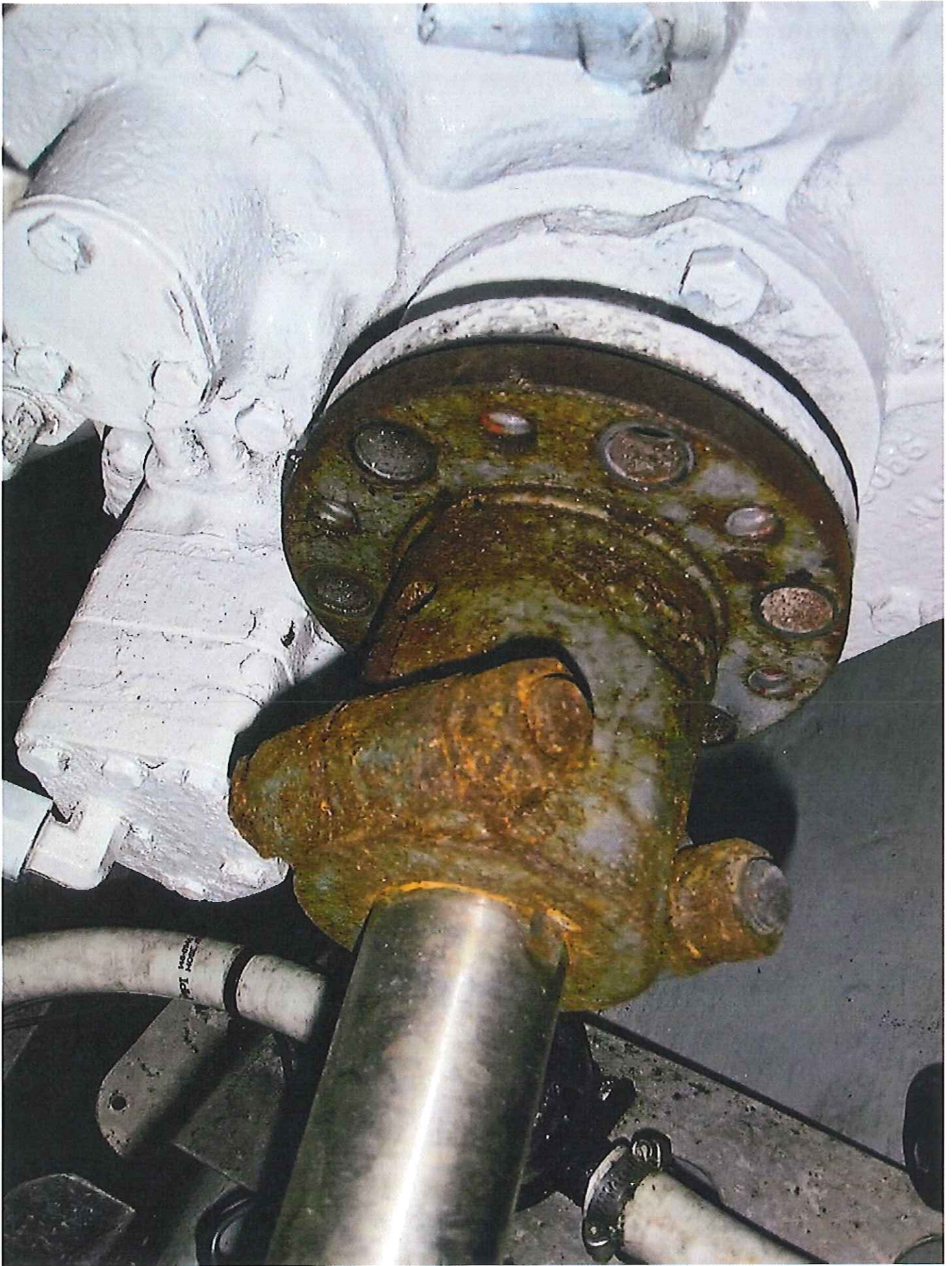
**Loop in the crossover
fuel line that should be
eliminated to prevent a
"water collection" area**

**Shut off valve
should be added**



3

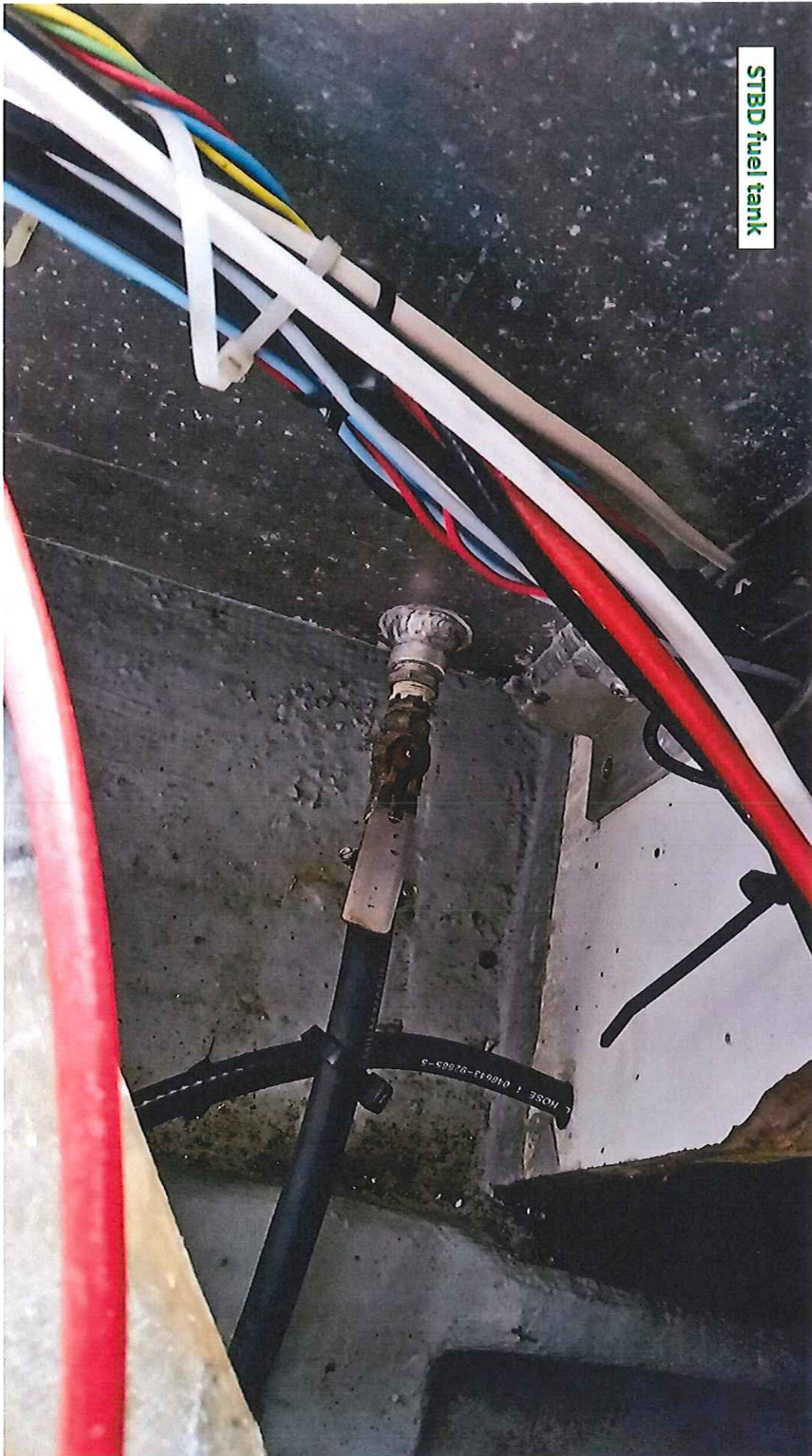




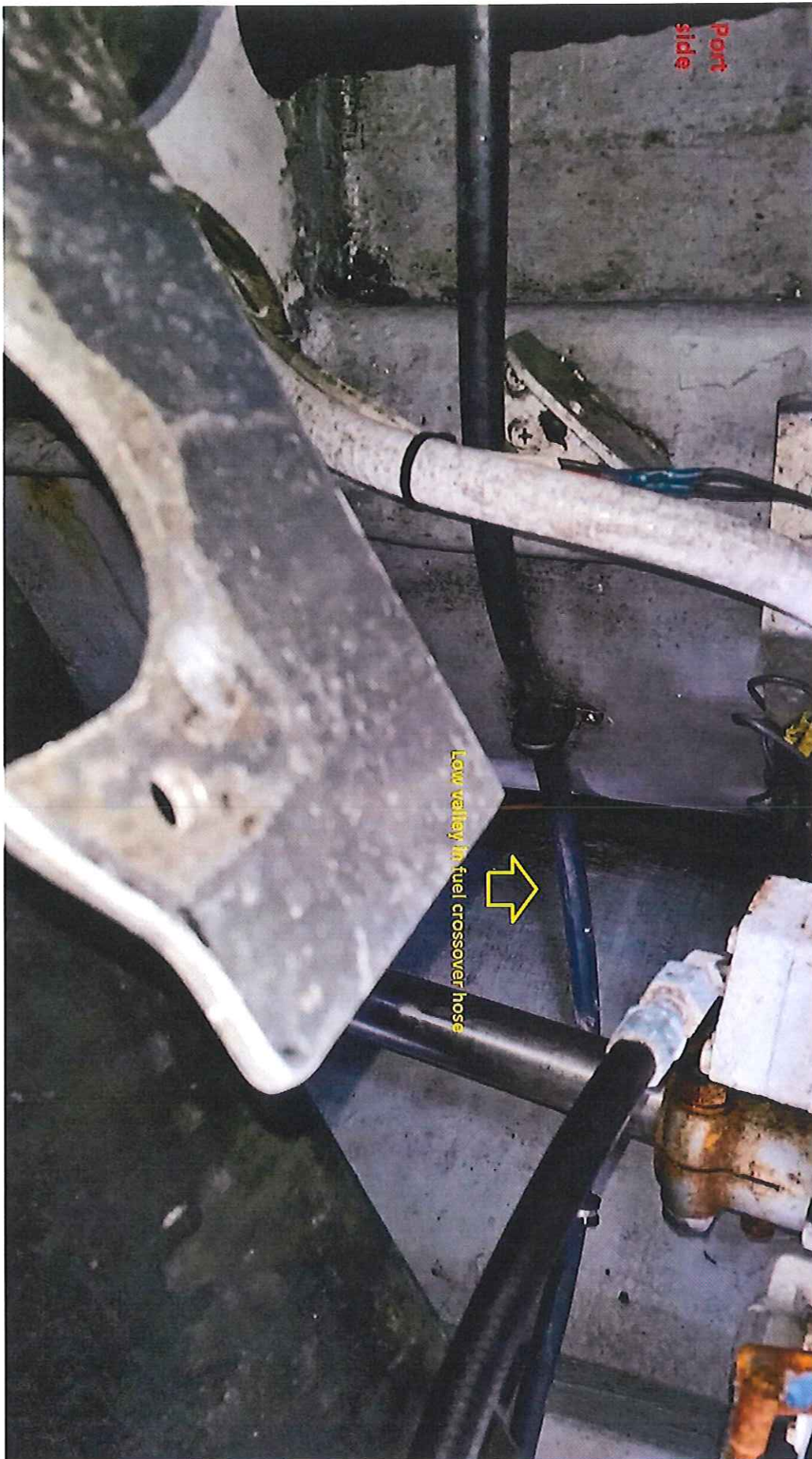
PORT tank

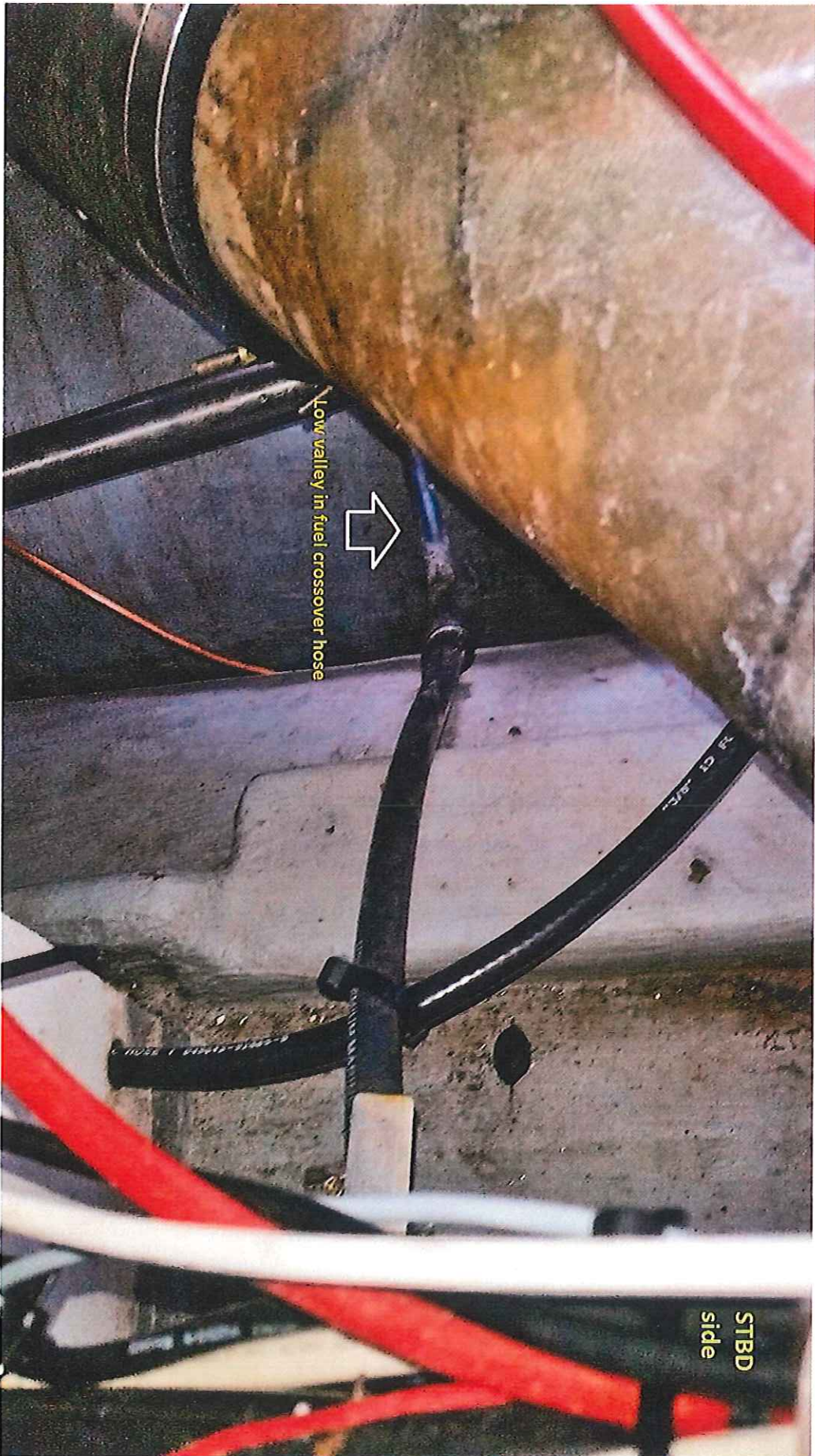
NO shut-off valve on the PORT fuel tank
(see ADAC H33.14.2)





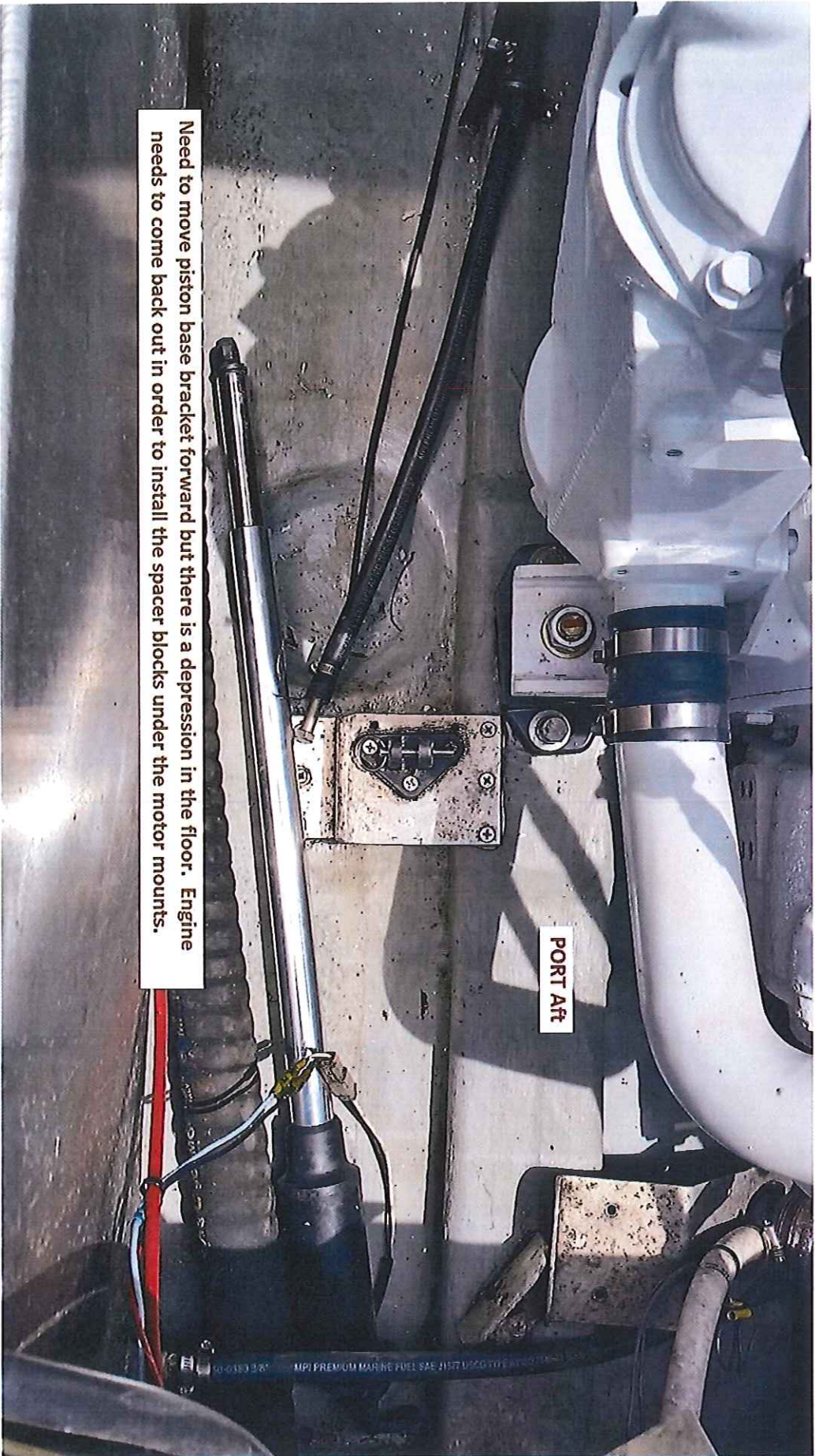
STBD fuel tank





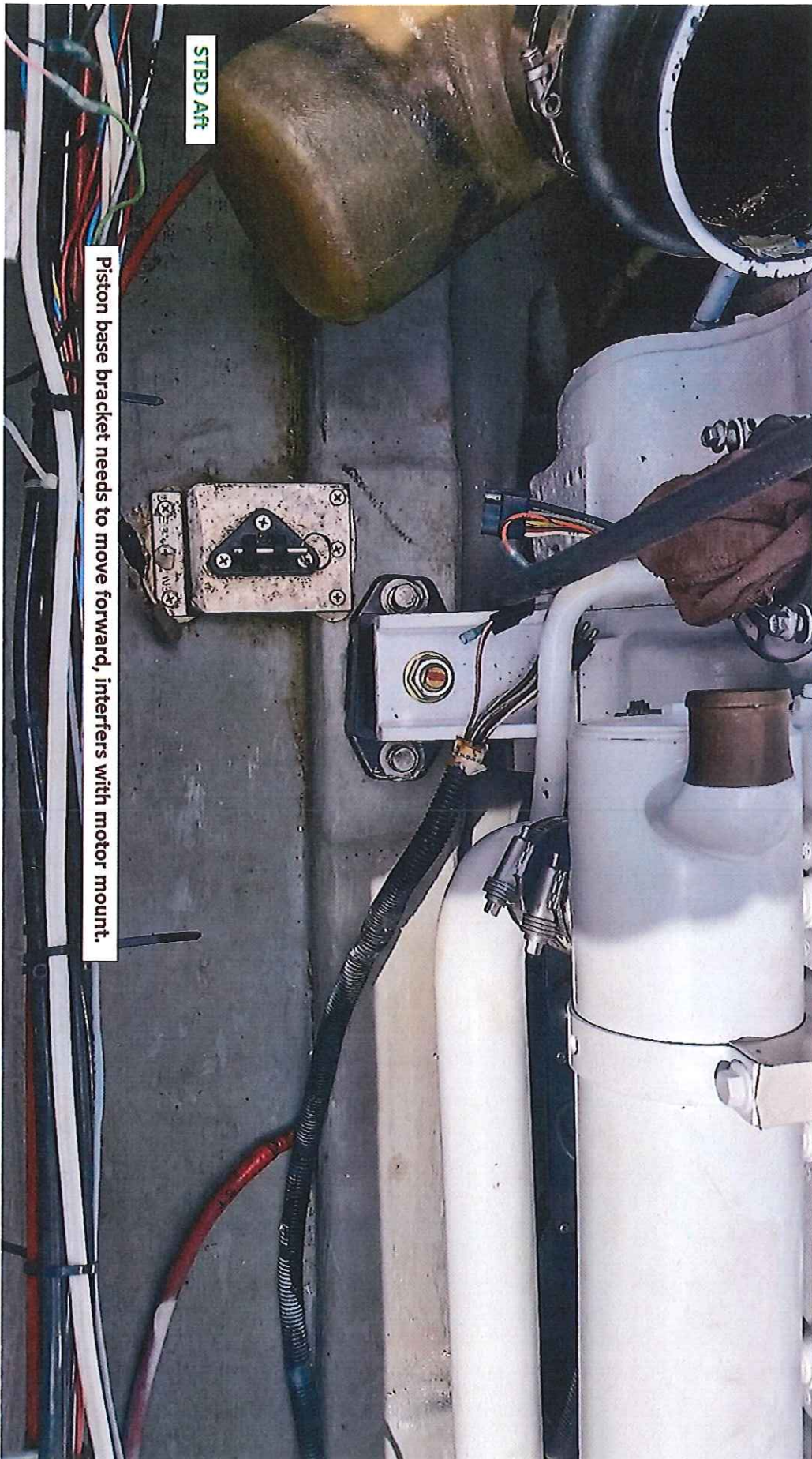


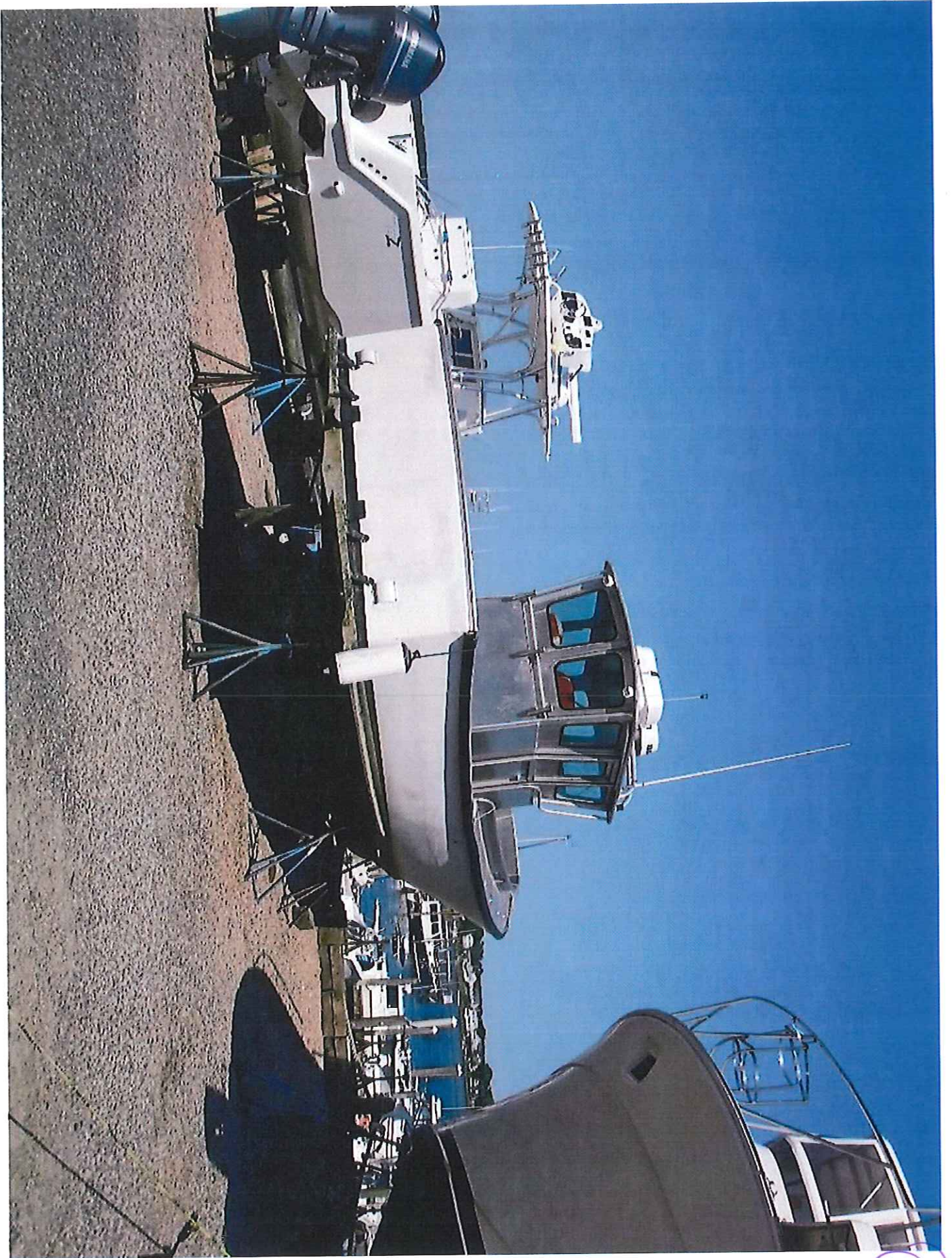




Need to move piston base bracket forward but there is a depression in the floor. Engine needs to come back out in order to install the spacer blocks under the motor mounts.

PORT Aft





64

