

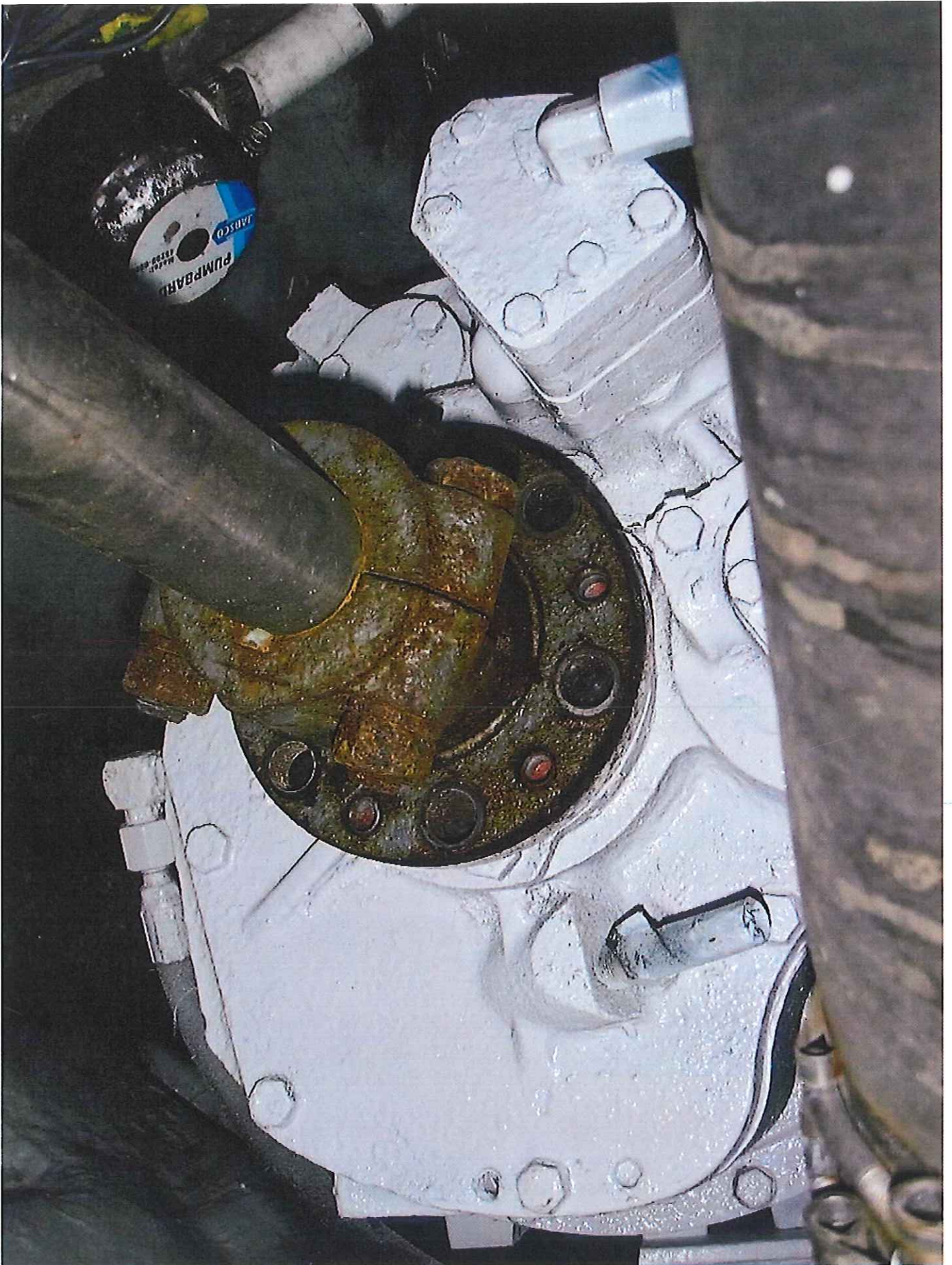


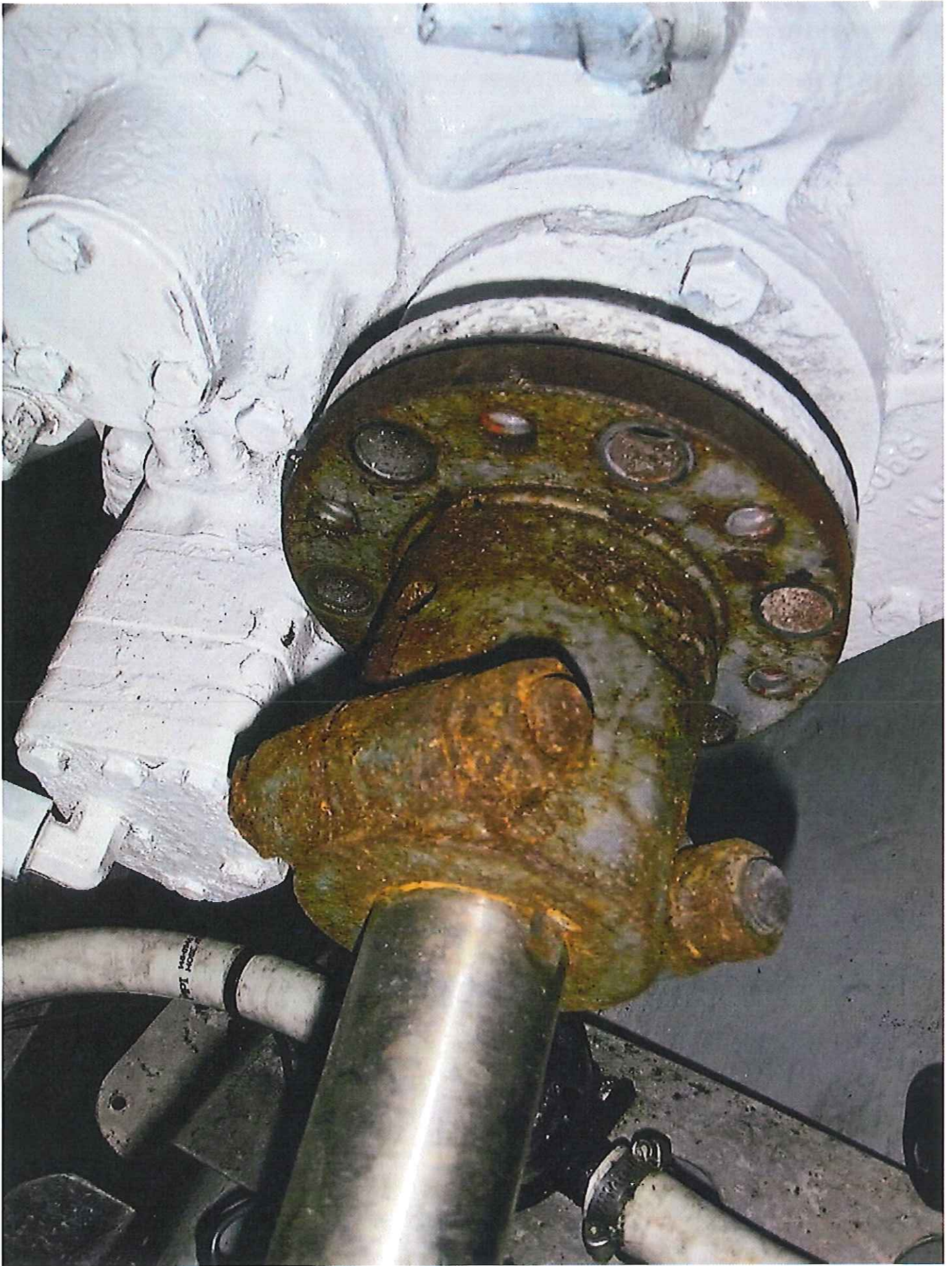
Loop in the crossover fuel line that should be eliminated to prevent a "water collection" area

Shut off valve should be added



3

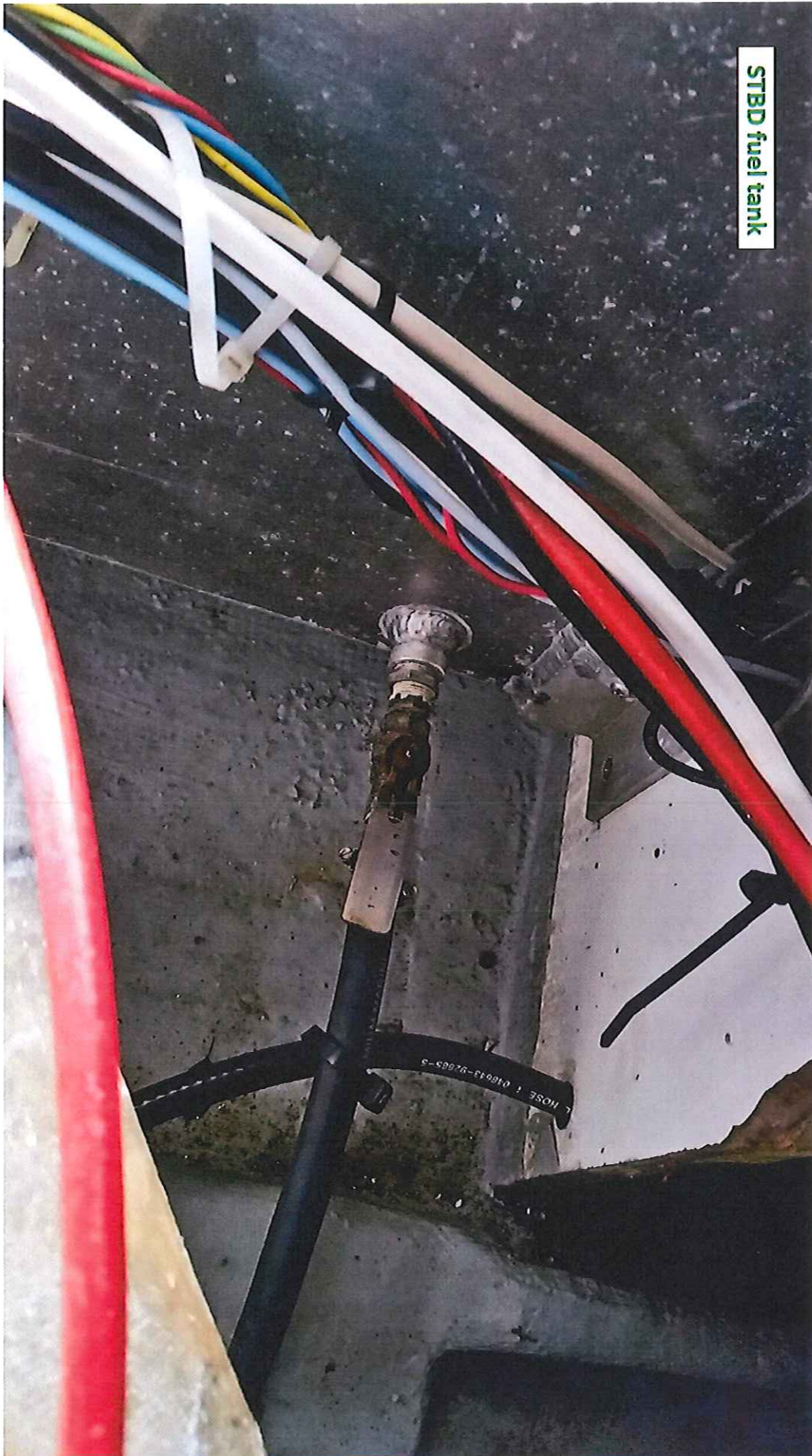


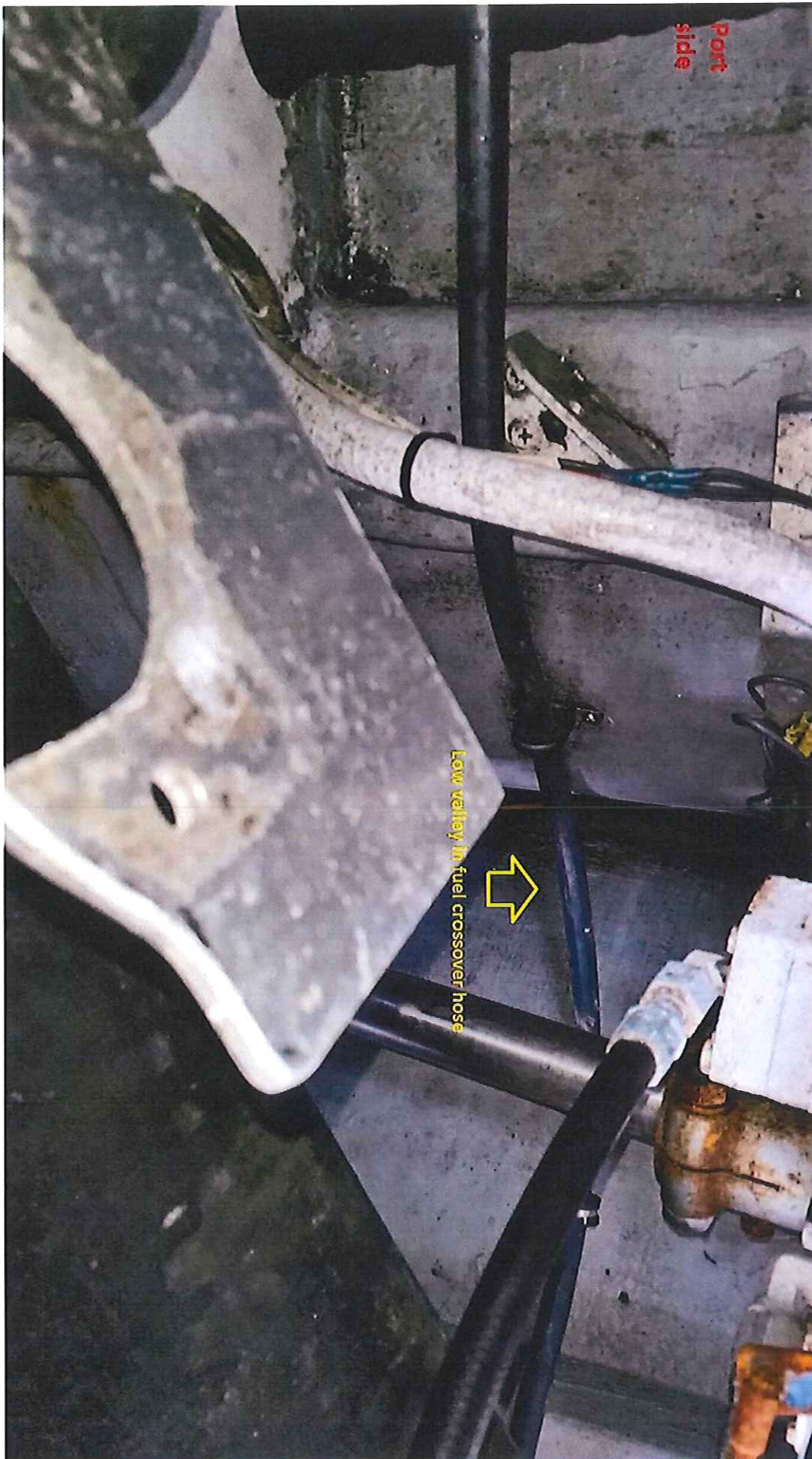


PORT tank

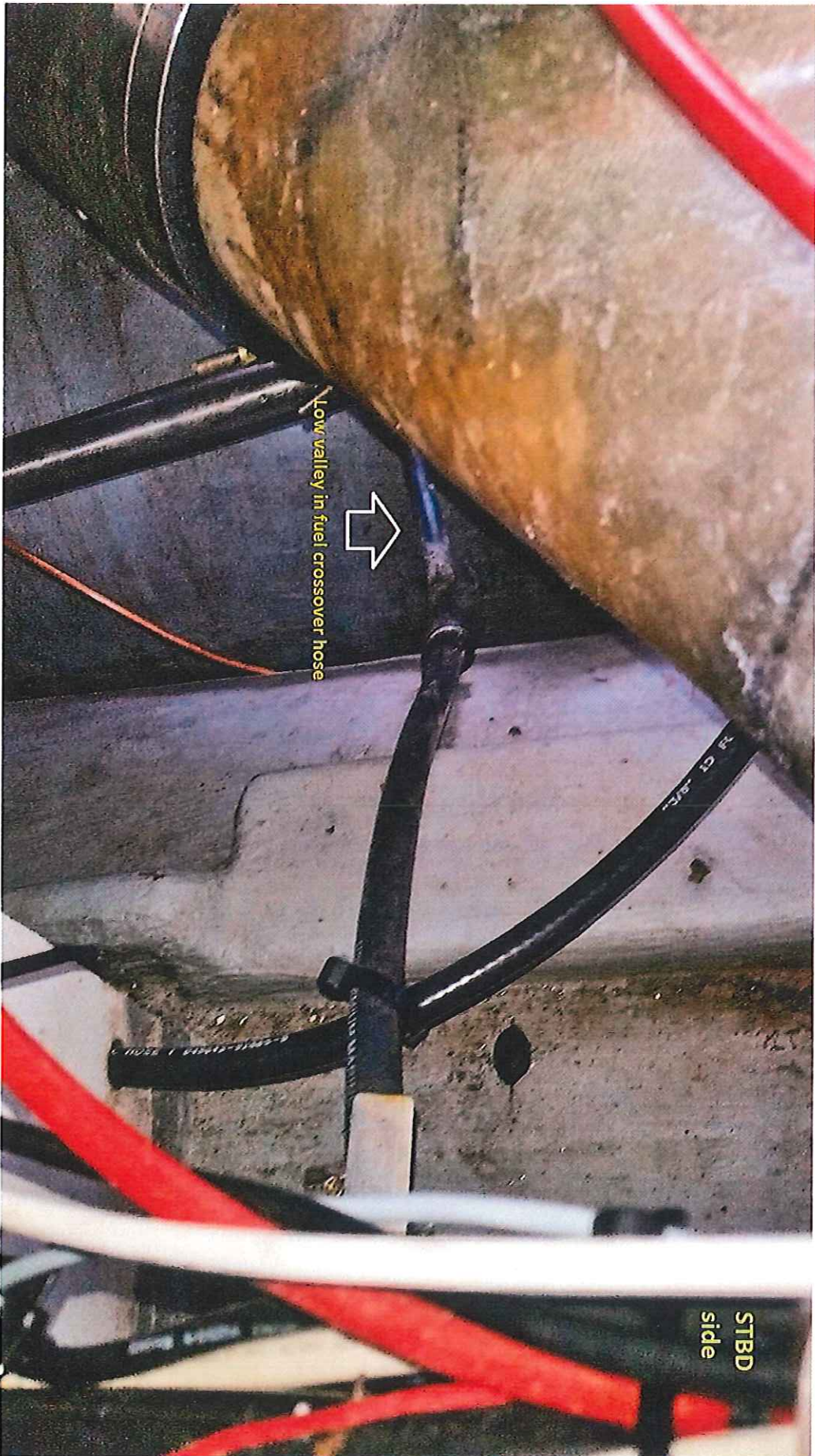
NO shut-off valve on the PORT fuel tank  
(see ADAC H33.14.2)





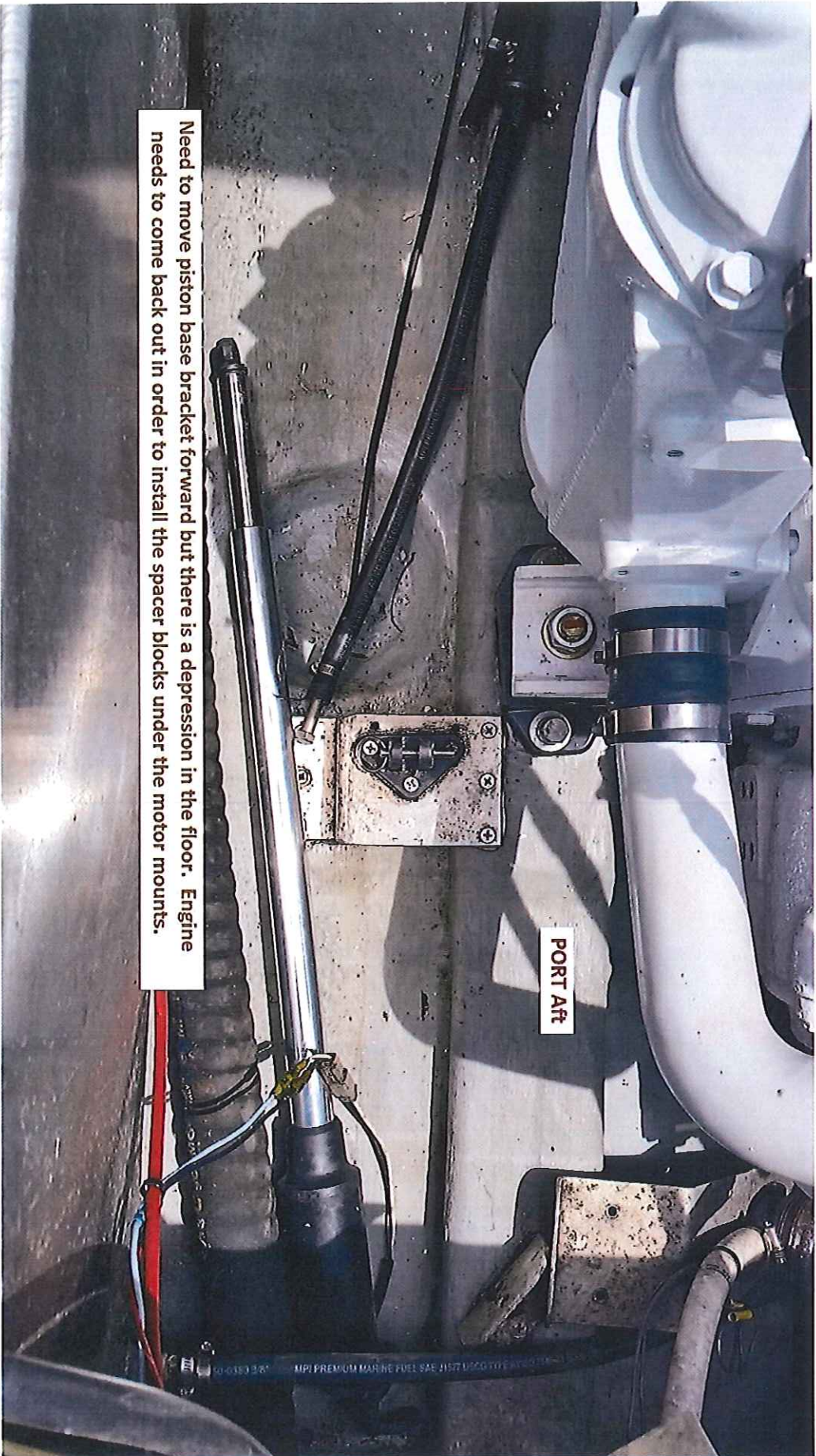






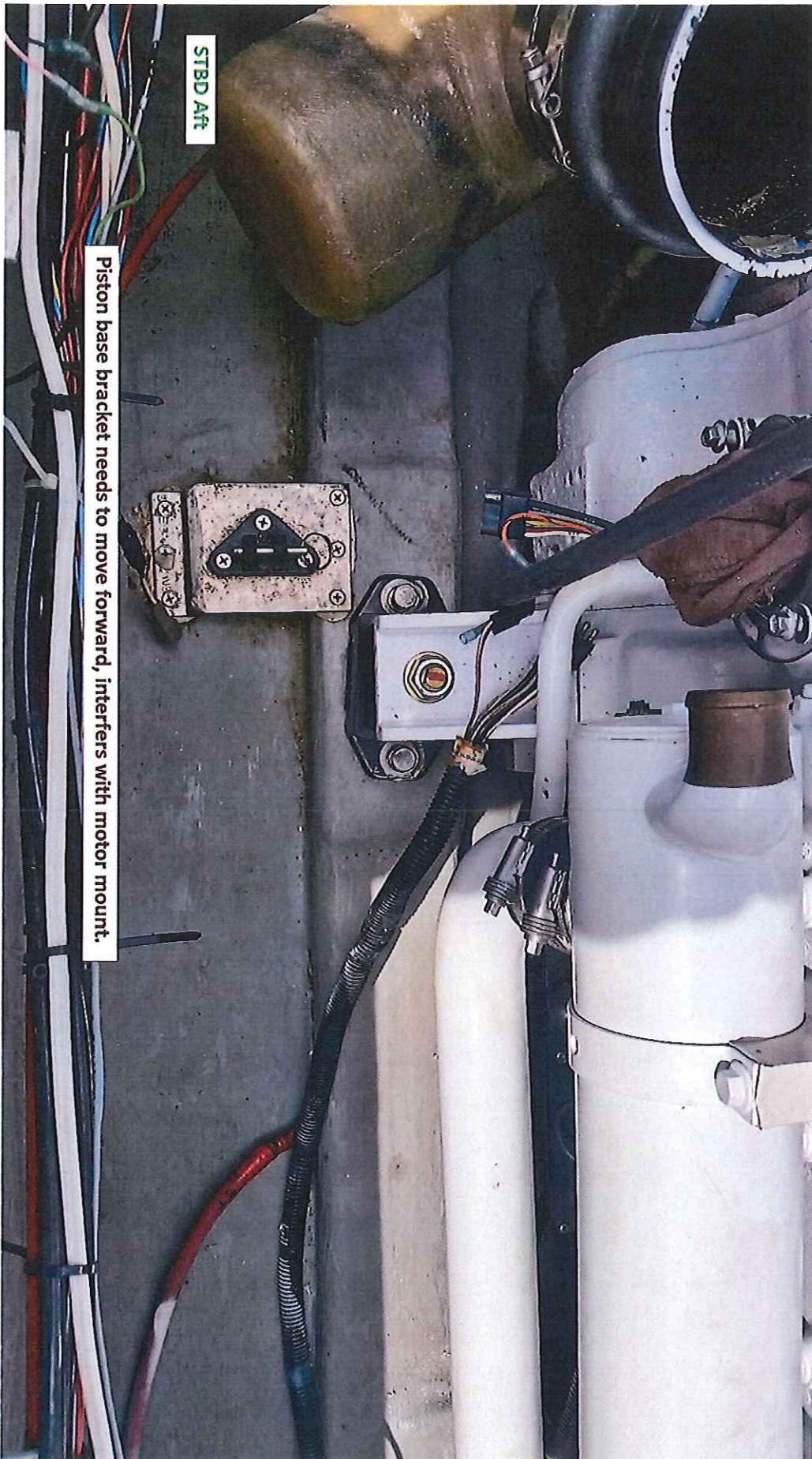


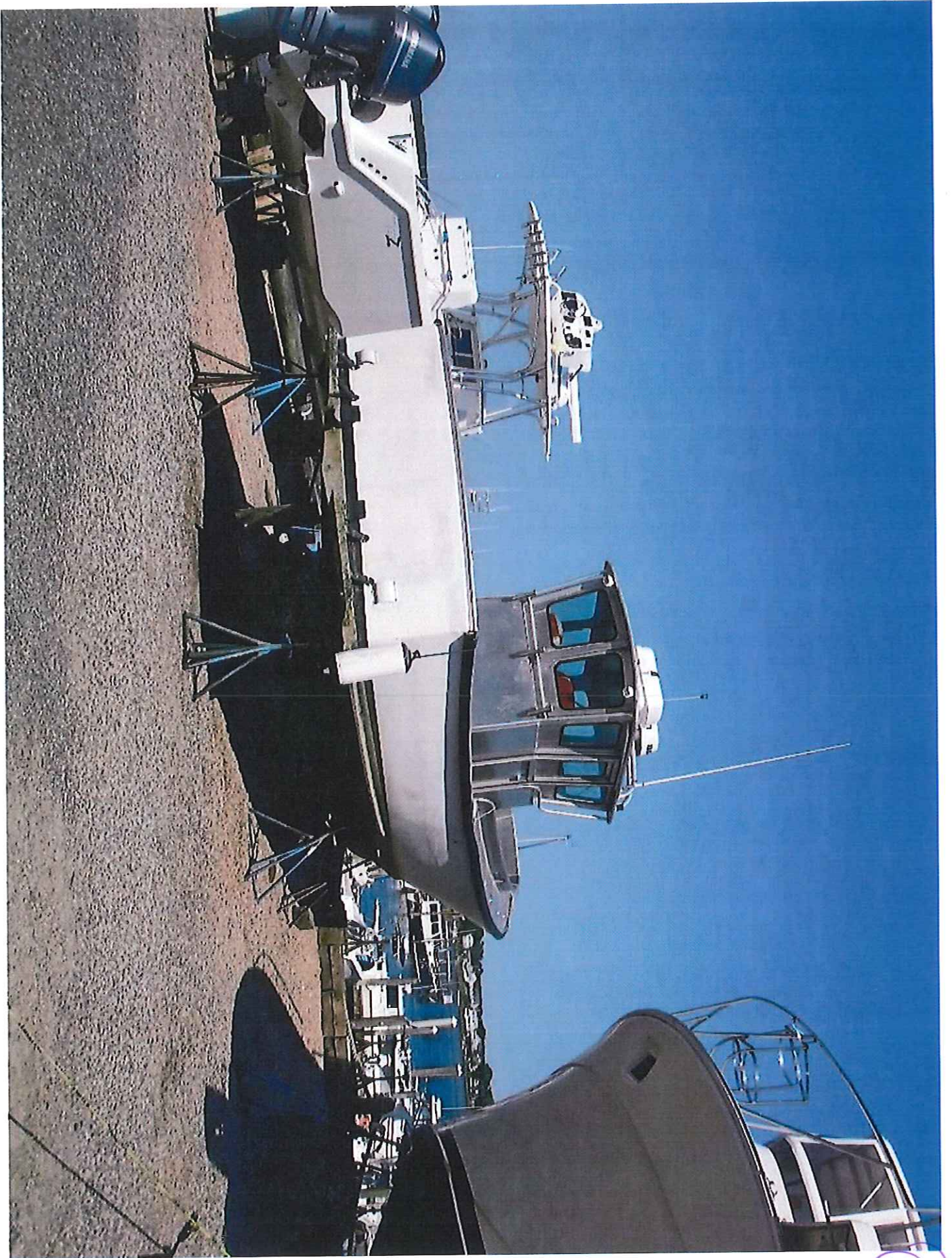




Need to move piston base bracket forward but there is a depression in the floor. Engine needs to come back out in order to install the spacer blocks under the motor mounts.

PORT Aft





64

